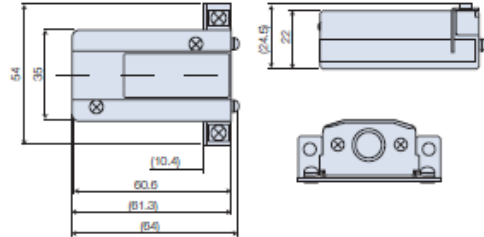


# Accessories

## DZ51 (Relay adapter) For connections of DG-B, DL-BR, DL-B and DT12/32N/P\* to LG, LH and LY displays

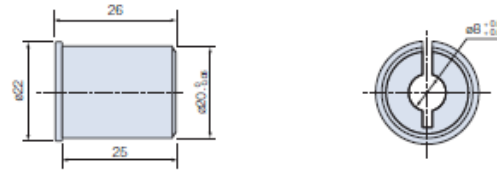


\*To connect the DT12/32N/P, use the DZ51 in combination with the MT10 detector.



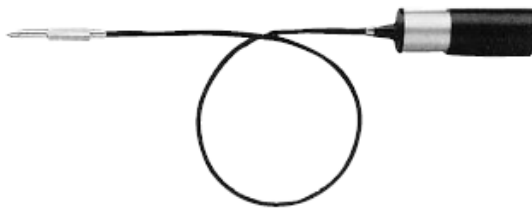
Unit : mm

## DZ-811 Bushing (for mounting a U60A or a DE30BR to a DZ-501 stand)

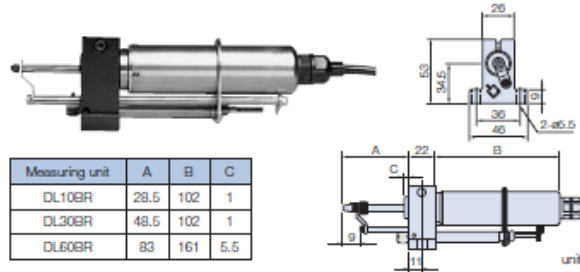


Unit : mm

## DZ173 Air release (for DE12BR/30BR, U Series)



## DZ175-010 Air Lifter (for DL10BR) -030 (for DL30BR) -060 (for DL60BR)

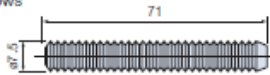


Measuring unit	A	B	C
DL10BR	28.5	102	1
DL30BR	48.5	102	1
DL60BR	83	161	5.5

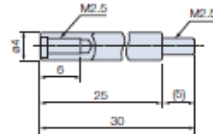
unit : mm

## DZ301 Bellows set (for DL330B, DE30BR)

Bellows



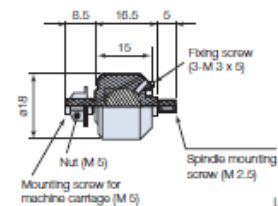
Extension spindle



•With the extension spindle attached, the spindle is extended by 25 mm and the measuring force increases by about 0.3 N.

Unit : mm

## DZ-191 Coupling



Unit : mm

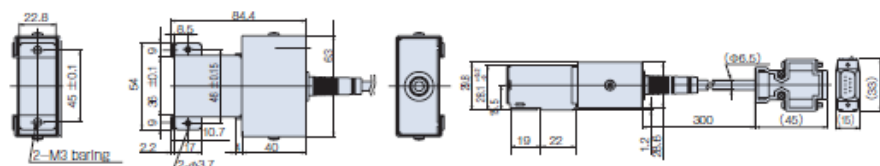
## SZ70-1 Adapter

SZ70-1 is required for connecting the following scale units and counters:

Gauge unit: DE-BR Series, DG-B Series

Counter: LY71 and LY72

\* Adapter DZ51 is also required



Unit : mm

\*Please refer to p54 for the details of the screw.

# Connection Cables

Measuring unit	Adapter for LT series	LT series	Interface unit	Adapter for Counter	Connection cable	Counter unit	Interpolators	Extension cables
DK805A/B, DK806A/B, DK810A/B	-	LT30	MG (MG10-P1/P2) (MG20-DK) (MG30-B1/B2)  (MG41-NC/NE) (MG42-4) Link Cable MZ41-**	-	CE-29-*** ***=-003(0.3m) -01(1m) -05(5m) -10(10m)	LY71, 72	-	CE-08** **=-01(1m), -03(3m), -05(5m), -10(10m), -15(15m)
DK10/25								CE-22** (Open-end) **=-01(1m), -03(3m), -05(5m), -10(10m)
DK50/100								CK-T** (Realize for flexion)
DK155PR5/205PR5								CK-T12(1m), T13(3m), T14(5m), T15(10m)
DK110NLR5								
DT12N/P	-	LT10A	MG (MG10-P1/P2) (MG20-DT) (MG30-B1/B2)	-	MT13 + CE-29	LY71, 72	MT12(for LT20A), MT13(for LT30) MT14(Cable with unterminated)	CE-08** **=-01(1m), -03(3m), -05(5m), -10(10m), -15(15m)
DT32N/NV/P/PV								CK-T12(1m), T13(3m), T14(5m), T15(10m), CK-T10(1m) CK-T105(5m) (Realize for flexion)
DT512N/P		LT11A						-
DG805B/810B	-	LT20A	MG (MG10-P1/P2) (MG20-DG) (MG30-B1/B2)	-	-	LY71, LY72	MD10A/20B ※D-sub15pin Female	-
DG10B/25B								
DG50B/100B/155B/205B								
DG-110B								
DL-B	-	LT20A	MG (MG10-P1/P2) (MG20-DG) (MG30-B1/B2)	DZ51 + SZ70-1	-	LY71, LY72	-	-
DE-BR	SZ70-2	LT30	SZ70-2+ MG (MG10-P1/P2) (MG20-DG) (MG30-B1/B2)	SZ70-1	-	LY71, LY72	-	-

# Compatible

Measuring unit	Adapter for LT series	LT series	Adapter for Counter	Connection cable	Counter unit	Interpolators	Extension cables
DT32N/NV/P/PV	Interpolator MT12 LZ60-P1/P2 is required to connect to LT100.	LT20 LT100	MT12 + DZ51	—	LY51, LY52	—	CE-08** **=-01(1m), -03(3m), -05(5m), -10(10m), -15(15m)
DT512NP							
DT12NP							
DT32N/NV/P/PV	—	LT10	—	—	—	—	CK-T12(1m), T13(3m), T14(5m), T15(10m) T101(3m) T105(5m) (Realize for flexion)
DT512NP							
DG805B/810B	—	LT11	—	—	—	—	—
DG10B/25B	—	LT20 LT100	DZ51	—	LY51, LY52	—	—
DG50B/100B/155B/205B							
DG110B							
DL-B	—	LT20 LT100	DZ51	—	LY51, LY52	—	—

## A description of external form chart of the screw

- When a screw thread is not mentioned in the Dimensions,  
It is mean numerical value base on standard pitch (National Coarse).
- The screw which conformed to ISO and JIS is enclosed.